



COBBLE CLOSE, BARROW UPON SOAR, LOUGHBOROUGH

ASKING PRICE: £145,000





This beautifully presented two-bedroom ground floor apartment is located on the popular Cobble Close in the highly sought-after village of Barrow upon Soar. Finished to a high standard throughout and tastefully decorated by the current owner, the property offers stylish, low-maintenance living in a convenient village setting.



The accommodation is accessed via a welcoming entrance hallway, which benefits from useful built-in storage options. The property offers two well-proportioned double bedrooms, both finished with a calm and contemporary feel, ideal for a range of buyers including first-time purchasers, downsizers or investors.

The light and airy bathroom is finished to a modern standard and complements the overall quality of the home. At the heart of the property is the open-plan kitchen, dining and living space, designed to maximise both space and natural light. A bay window within the living area enhances the sense of space and floods the room with daylight, creating a bright and inviting environment for everyday living and entertaining.







Externally, the property benefits from a garage, an allocated parking space and additional parking available to the front of the development, providing excellent practicality. Located within the desirable village of Barrow upon Soar, the apartment enjoys easy access to local amenities, transport links and countryside walks, making it an attractive and well-rounded home.

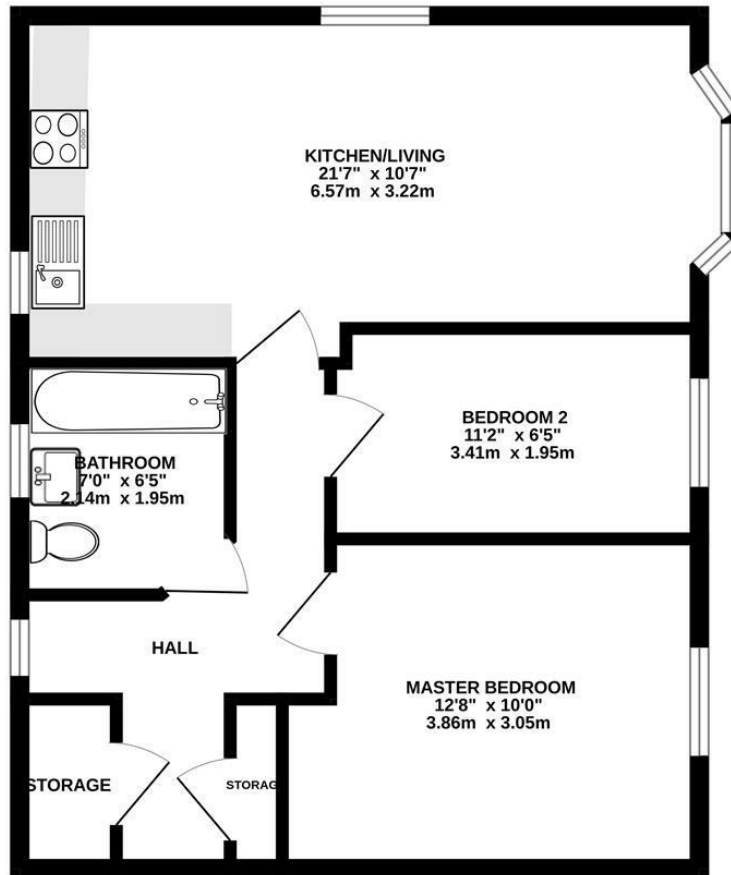




Barrow upon Soar is a highly regarded and vibrant village, popular for its strong community feel, excellent local amenities and picturesque setting along the River Soar. The village offers a wide range of facilities including independent shops, cafés, pubs, restaurants, well-regarded schools and scenic riverside and countryside walks. Barrow upon Soar Train Station provides direct rail links to Leicester, Loughborough and beyond, making it ideal for commuters, while nearby road connections offer easy access to surrounding towns and cities. Blending traditional village charm with modern convenience, Barrow upon Soar continues to be one of Leicestershire's most desirable places to live.



GROUND FLOOR
538 sq.ft. (50.0 sq.m.) approx.



TOTAL FLOOR AREA : 538 sq.ft. (50.0 sq.m.) approx.

Whilst every attempt has been made to ensure the accuracy of the floorplan contained here, measurements of doors, windows, rooms and any other items are approximate and no responsibility is taken for any error, omission or mis-statement. This plan is for illustrative purposes only and should be used as such by any prospective purchaser. The services, systems and appliances shown have not been tested and no guarantee as to their operability or efficiency can be given.
Made with Metropix ©2026

KEY FEATURES:

- Ground floor two-bedroom apartment
- Finished to a high standard throughout
- Open-plan kitchen, dining and living space
- Bay window providing excellent natural light
- Garage, allocated parking and additional visitor parking
- Sought-after village location in Barrow upon Soar



2



1



1



538.00 sq ft

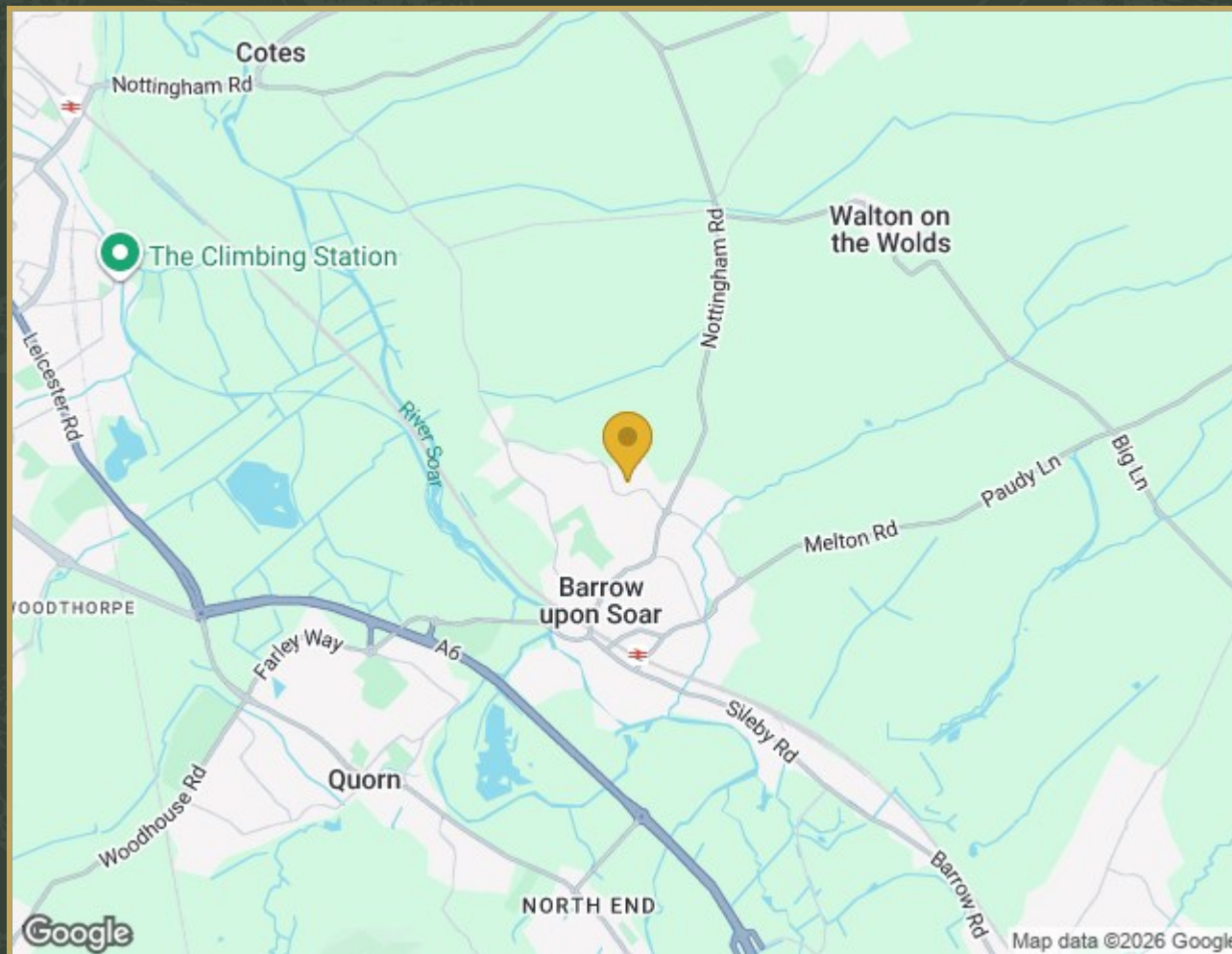


Energy Efficiency Rating		
	Current	Potential
Very energy efficient - lower running costs		
(92 plus) A		
(81-91) B		
(69-80) C		
(55-68) D		
(39-54) E		
(21-38) F		
(1-20) G		
Not energy efficient - higher running costs		
England & Wales	EU Directive 2002/91/EC	

Environmental Impact (CO ₂) Rating		
	Current	Potential
Very environmentally friendly - lower CO ₂ emissions		
(92 plus) A		
(81-91) B		
(69-80) C		
(55-68) D		
(39-54) E		
(21-38) F		
(1-20) G		
Not environmentally friendly - higher CO ₂ emissions		
England & Wales	EU Directive 2002/91/EC	



Property Location



Flat 1, 6 Cobble Close, Barrow Upon Soar, Loughborough, LE12 8GR

